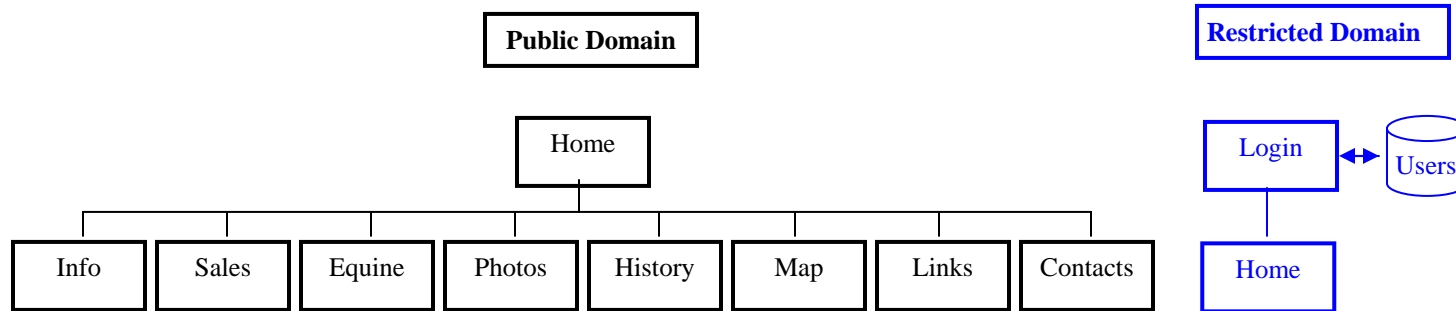


## Huckins Farm Web Organizational Structure

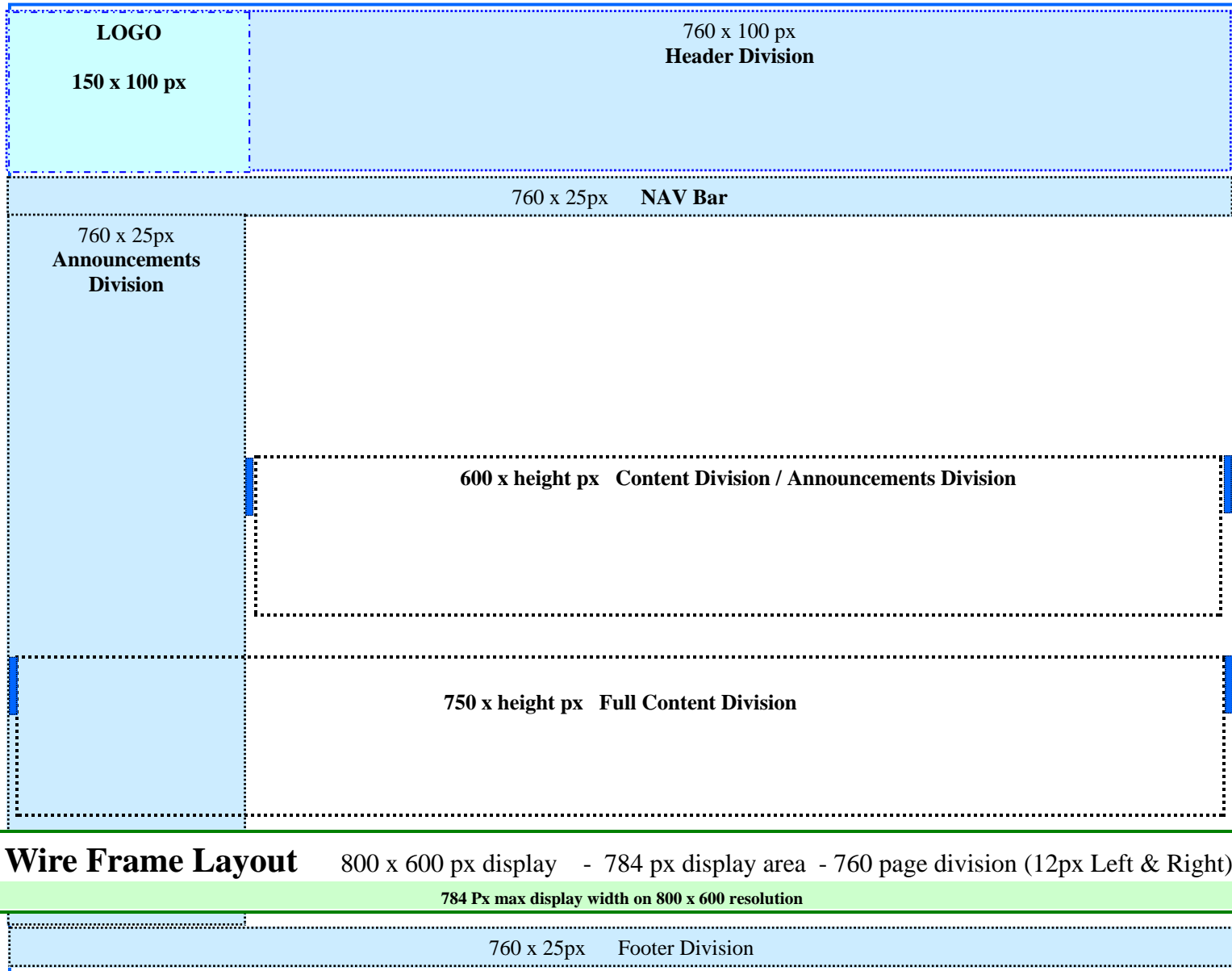


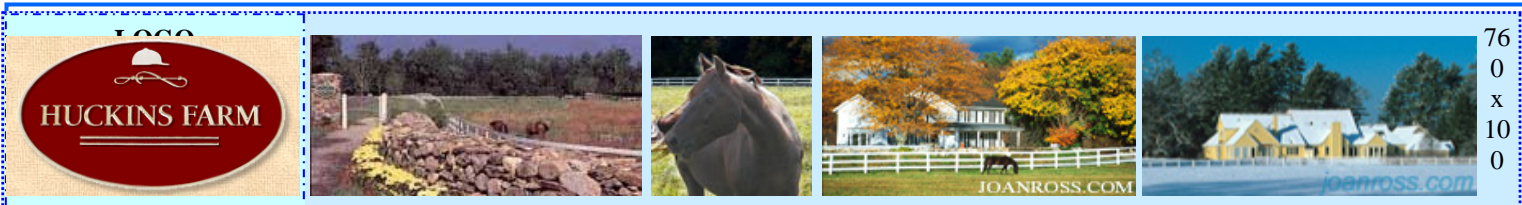
Huckins Farm

### Design Concept

- 1) Public domain for public relations with sales and marketing components.
- 2) Public announcements area on home page
- 3) Equine center with collage, sound, and boarding contact info (boarding open to the public).
- 4) Flash—Homepage banner, (Map) virtual trail walk with rollovers.
- 5) **Restricted domain for homeowners to access private Condo documents.**

Technologies: Html, CSS, Flash, WAV, Forms, **Database (Restricted User Access)**





[Home](#) | [Info](#) | [Homes Available](#) | [Equine Center](#) | [Photos](#) | [History](#) | [Aerials](#) | [Links](#) | [Contact](#)

**NOTICES**  
\* \* \* \* \*

**February Newsletter**

---

Wine & Cheese  
at Clubhouse  
Sunday, March 13  
*See details in Newsletter*

---

**Meeting Agenda**

---

600 x height px Content Division / Announcements Division

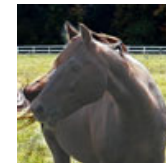
750 x height px Full Content Division

**Wire Frame Layout** 800 x 600 px display - 784 px display area - 760 page division (12px Left & Right)  
784 Px max display width on 800 x 600 resolution

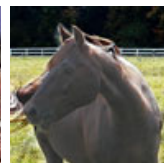
760 x 25px Footer Division

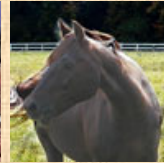
1  
6  
x  
P  
x  
  
V  
E  
R  
T  
I  
C  
A  
L  
  
S  
C  
R  
O  
L  
L

**FLASH Sequence for banner**



*Life Style, Community, Luxury Condominiums*





[Home](#) | [Info](#) | [Sales](#) | [Equine Center](#) | [Pictures](#) | [History](#) | [Maps](#) | [Links](#) | [Contact Us](#) | [Homeowners Only](#)

## NOTICES

\* \* \* \* \*

[February Newsletter](#)

Wine & Cheese  
at Clubhouse  
Sunday, March 13  
*See details in Newsletter*

[Meeting Agenda](#)

### A Condominium Community in Historic Bedford, Massachusetts

Huckins Farm is a unique luxury condominium community of 164 privately owned homes, including attached and stand-alone units and an antique farmhouse. The condo association owns an on-site equestrian center with a barn and paddocks. Amenities include a recreation center with a clubhouse, tennis courts, and an outdoor swimming pool and hot tub. Our condo community is located 15 miles north of Boston, nestled on 290 acres of pastoral farmland, with running horses, grassed pastures, old New England stone walls and miles of walking and riding trails. Huckins Farm is surrounded by forest and the Great Meadows Wildlife Refuge, a 3,000 acre national conservation area.

A working farm for 200 years, Huckins Farm is ecologically protected and preserves nearly 70 percent of its land as dedicated conservation land.